



siccion marketing, inc.
setting the standards...

SURVEYING • MATERIALS TESTING • TECHNICAL SERVICES



UNDERGROUND & AERIAL INFRASTRUCTURE SOLUTIONS



SCAN THE QR CODE
FOR MORE INFORMATION



(+63) 939 938 1965



(+632) 8711- 8416



marketing@smi-group.com.ph



www.smi-group.com.ph



HDD C300



HDD C430

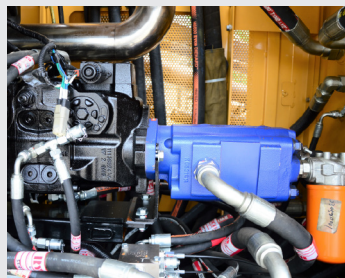


HDD C500

TECHNICAL SPECIFICATION

	C300	C430	C500
Engine	Cummins	Cummins	Cummins
Horsepower	150 hp/113 kW	205 hp/151 kW	243 hp/179 kW
Pullback/Thrust Force	30 ton	43 ton	50 ton
Spindle Torque	8,918 Nm	11,482 Nm	14,000 Nm
Carriage Speed	28 m/min	42 m/min	30 m/min
Spindle Speed	135 rpm@ engine 2200rpm	165 rpm @ engine 2200rpm	165 rpm @ engine 2200 rpm
Remote Lockout	Included	Included	Included
Strike Alert	Included	Included	Included
Weight	11.5 ton	13 ton	15 ton
Rod Size	73 mm / 76 mm	73 mm / 83mm	89 mm
Max Pilot Bore Distance (m)	500	650	900
Max Hole Diameter (mm)	650	900	1,000

FEATURES



Closed-Loop Hydraulic System

Utilizes a Saucer-Danfoss closed-loop piston pumps with merits of low energy consumption and high efficiency



Direct Drive Motor

The imported proclaim drive motors maximize the efficiency of the system, saving energy and fuel, improving reliability and product life.



The Plus+1 Control System

It is an upgraded C-Series Control System for improved reliability and efficiency. This allows faster processing of commands, smooth operation and the option of rock drilling and auto drilling functions to help get through hard ground conditions.



Remote Lockout

Our machines have industry leading safety features such as the Remote-Lock-Out System, Electric Strike Alert System, and Operator Presence Monitoring.

ACCESSORIES



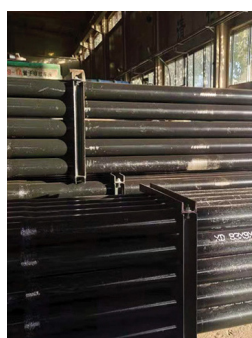
REAMER



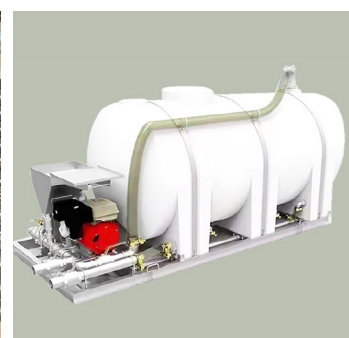
DRILL HEAD KIT



SUBSAVER



DRILL RODS



MUD MIXING TANK

LEICA DSX GPR



Technical Specification

Antenna	Single Antenna
Weight (with battery)	25 kg
Frequency	600 MHz
Depth	Up to 4m
Battery	14.8 V, 5800 mAh Li-ion
• Battery life	Up to 8 hours
Display	CT1000 tablet
Bluetooth	
• Data Transfer	Yes
• Connection to external GPS	Yes
Ingress Protection Rating	65

LEICA ULTRA LOCATOR



Technical Specification:

Frequency range:	50 Hz - 200 kHz
Sensitivity:	33 kHz (1uA at 1 m)
Depth:	max 6 m (20 ft)
Battery life (max):	30 hrs continuous 70 hrs intermittent
Weight:	2.2 kg (4.8 lb) Locator 3.4 kg (7.7 lb) Transmitter
Transmitter output power:	12 watt
Enabled frequencies:	512 Hz, 3.14 kHz, 8.192 kHz, 32.768 kHz, 83.1 kHz, 200 kHz
Custom frequencies:	Up to 100 custom frequencies from 256 Hz - 83 kHz

C-THRU CONCRETE SCANNER



Technical Specification

Antenna Center Frequency	2.0 GHz
Antenna Polarisation	Horizontal and Vertical
Number of Radar Channels	2 (dual-polarised antennas)
Scan Interval	Up to 10 scans/cm
Depth Range	Up to 80 cm (up to 31.5 in.)
Positioning System	"Virtual Pad" (based on 3 High safety - Class 1 laser sensors with reflective bar)
AC Power Conduits Detection	EM sensor integrated (50/60 Hz)

DCI FALCON LOCATOR



DIGITAL CONTROL

Technical Specification

Product ID / Model Number	FF2+ / FAR2
Receiving Frequencies	4.5-45 kHz
Accuracy	±5% up to max depth range
Transmitter Depth Range ^{1,2}	Up to 160ft (48m)
Transmitter Data Range ^{1,2}	Up to 200ft (61m)
Battery Life ³	Up to 14 hrs

DCI TERATRAK TERRAIN MAPPING



Technical Specification

Accuracy Two-way (elevation) ¹	±2in (5cm) over 500ft (152m)
Accuracy Two-way (elevation) ¹	±2in (5cm) over 100ft (30m)
Battery	Built-in lithium-ion battery pack
Voltage, current	5.0 VDC nominal, 500 mA max
Weight	141lbs (6.35kg)
Compatible Phone App ²	Apple & Android

BATTERY DRIVEN HYDRAULIC CUTTING TOOL



Technical Specification

Working Force	120 kN
Cutting Capacity	Copper-aluminum armored cable
Opening Size	Diameter 105mm
Tool Weight	9.5 kg (with battery)
Charging Time	About 80 min
Cycles Per Charge	10KV 3x400mm2 YJV22 cable, about 80

BATTERY DRIVEN HYDRAULIC CRIMPING TOOL



Technical Specification

Working Force	120 kN
Crimping Range	16-400mm ² (copper)
Opening Size	42 mm
Tool Weight	6.4 kg (with battery)
Charging Time	About 80 min
Cycles Per Charge	185mm ² DIN copper, about 300

AERIAL WORK PLATFORM



Technical Specification

Maximum working height	17.1 m
Maximum bucket bottom height	15.1 m (14.5 m + 0.6 m: With Bucket ascended)
Maximum working radius	Approx. 11.4 m
Maximum bucket loading capacity	250 kg or two (2) persons
BOOM	The F.R.P. made top boom section with a high capacity insulating for safety. Tested at 100 kV/5 min

HD25 MINI EXCAVATOR



Technical Specification

Engine Output	17.5 kW/2,200min-1
Operating Weight	2,500 kg
Bucket Capacity	1/4 m ³
Maximum Digging Depth	2,440 mm

OTHER PRODUCTS

- Fusion Splicer - Tool Kit
- Fiber Blowing Machine
- HDPE & MPP Pipes
- OSP Tools and Equipment
- HDD Downhole Tools



siccion marketing, inc.

MAIN: CBS Building, 1800 A. Mendoza St., Sampaloc, Manila 1008 Philippines

☎ (02) 8711- 8416 / (02) 8711 - 8422 / (02) 8711- 8945 📞 0939-938-1965

✉ marketing@smi-group.com.ph 🌐 www.smi-group.com.ph

BRANCH: G/F, Benedicto IT Center, A.S. Fortuna St., Brgy. Bakilid, Mandaue City, Cebu

☎ (032) 253 - 5987 📞 0925 558 5567 ✉ smicebu@smi-group.com.ph

